

GAF

Roofing System Solutions

Asphaltic | Liquid-Applied | Single-Ply | Insulation



USS Arizona Memorial Visitor Center
Pearl Harbor in Honolulu, Hawaii



Protect your building, your business,
and the people who count on them
with the full lineup of GAF commercial
roofing solutions.



We protect what matters most™

A GAF Solution for All Your Needs

Choosing the right roofing system for an application can be complicated. There are many roof membrane options, and each property may have its own set of unique requirements. So, how do you choose the right roofing system for your property?

Choose the Right Company

GAF is North America's largest roofing manufacturer. We manufacture products that provide more solutions than any other roofing manufacturer. We're not vested in a single technology; our broad product offering is designed to help you select a roofing system that is right for your property.

Choose the Right Team To Work with

The GAF commercial roofing team can guide you in system choice, preparation of design materials, construction details, specification preparation, and more! Contact the GAF Architectural Services Team at 1-800-522-9224 or see the back cover of this brochure for your local sales office.

Choose the Right Roof to Fit Your Needs

Listed below is a selection chart to help with some of the physical performance criteria of individual products, but there are other important considerations as well. Having a good understanding of your investment objectives (e.g., long term or short term), property use (e.g., the importance of aesthetics or amount of roof traffic), location (e.g., inner city or desert), and the overall building construction will help ensure the best choice.

Answer specific questions and get a tailored suggestion of what roofing systems to consider for your building's needs. Use Roof Advisor today. gaf.com/RoofAdvisor

Desired Characteristic	ASPHALTIC								LIQUID-APPLIED									SINGLE-PLY														
	RUBEROID®/ LIBERTY™ SBS Modified Bitumen				RUBEROID® APP Modified Bitumen				GAFGLAS® Built-Up Roofing			United Coatings™ Roof Mate™ Coating			HydroStop® PremiumCoat® System			EverGuard Extreme® TPO			EverGuard® TPO			EverGuard® TPO Fleece-Back			EverGuard® PVC			EverGuard® PVC Fleece-Back		
	LIBERTY™ Self-Adhered	Torch	Mop	Cold-Applied	Torch	Mineral-Surfaced	Gravel	For Metal Roofs	For Asphaltic Roofs	For Single-Ply Roofs	For Metal Roofs	For Asphaltic Roofs	For Single-Ply Roofs	Adhered	Mechanically Attached	RhinoBond®	Adhered	Mechanically Attached	RhinoBond®	Adhered	Mechanically Attached	RhinoBond®	Adhered	Mechanically Attached	RhinoBond®	Adhered	Mechanically Attached	RhinoBond®				
Multi-Layered Membrane Protection	●	●	●	●	●	●	●	●	●	●	●	●	●	●	●	●	-	-	-	-	-	-	●	-	-	-	-	-	-			
Flexes To Conform To Roof Movement	●	●	●	●	●	●	●	●	●	●	●	●	●	●	●	●	●	●	●	●	●	●	●	●	●	●	●	●	●			
Low Maintenance	●	●	●	●	●	●	●	●	●	●	●	●	●	●	●	●	●	●	●	●	●	●	●	●	●	●	●	●	●			
Light Reflective For Energy Savings	●	● ²	● ²	●	● ²	● ²	●	●	●	●	●	●	●	●	●	●	●	●	●	●	●	●	●	●	●	●	●	●	●			
Puncture/Leak Resistant	●	●	●	●	●	●	●	●	●	●	●	●	●	●	●	●	●	●	●	●	●	●	●	●	●	●	●	●	●			
Easy To Repair After Installation	●	●	●	●	●	●	●	●	●	●	●	●	●	●	●	●	●	●	●	●	●	●	●	●	●	●	●	●	●			
Heat-Welded, Self-Adhered, Torched, Cold-Applied, Or Mopped Seam Strength	●	●	●	●	●	●	●	-	-	-	-	-	-	-	-	-	●	●	●	●	●	●	●	●	●	●	●	●				
Grease/Oil/Chemical Resistant ¹	●	●	●	●	●	●	●	●	●	●	●	●	●	●	●	●	●	●	●	●	●	●	●	●	●	●	●	●	●			
Can Be Installed In Cool Weather	●	●	●	●	●	●	●	●	●	●	●	●	●	●	●	●	●	●	●	●	●	●	●	●	●	●	●	●	●			
High Heat and UV Resistance	●	●	●	●	●	●	●	●	●	●	●	●	●	●	●	●	●	●	●	●	●	●	●	●	●	●	●	●	●			
Maximum Guarantee/Warranty Length In Years*	20	20	20	20	20	20	20	20	15	15	20	20	20	35	30	35	30	25	30	30	25	25	25	25	25	20	25	25				

*Note: For complete details, restrictions, requirements, terms, and conditions, please refer to official guarantee document and applicable GAF specification manual.

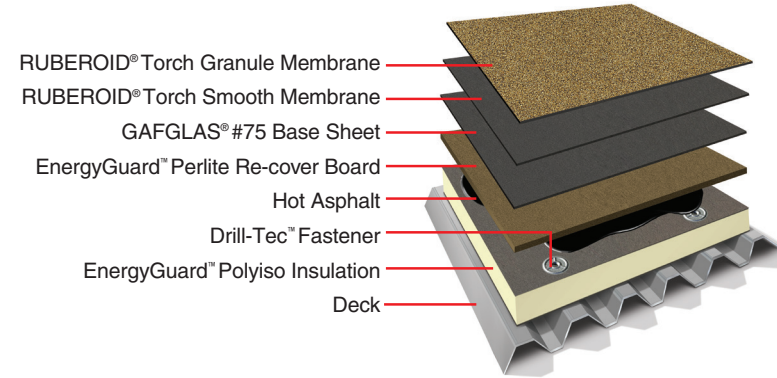
¹See applicable GAF guarantee/warranty for specific exclusions
²Requires the use of EnergyCap™ Products
³May require that installation adhesive be preheated

RUBEROID® Modified Bitumen Roofing

Modified Bitumen products are time-proven systems that have been around for decades due to their reliable performance

- GAF has a complete line of SBS and APP asphalt products
- Multi-ply construction gives peace of mind that the roof is durable and will stand the test of time
- A variety of installation options are available including hot mop, torch/heat weld, cold applied, and self-adhered to fit many different types of roofing challenges
- Available guarantee up to 20 years*
- Available in premium fire-rated systems (RUBEROID® Torch Plus Granule FR, RUBEROID® Mop Plus Granule FR, or RUBEROID® HW Granule Plus FR Membrane)
- RUBEROID® EnergyCap™ products have a factory-applied EnergyCote™ premium, reflective elastomeric coating to provide a highly reflective surface and are ENERGY STAR® certified (U.S. only).

*See applicable guarantee for complete coverage and restrictions.



TYPICAL 3-PLY TORCH-APPLIED SYSTEM USING BUR BASE SHEET AND PREMIUM APP MODIFIED BITUMEN MEMBRANES

RUBEROID® Modified Bitumen Membrane Selection Guide

	Mop-Applied	Torch-Applied	Cold-Applied	Maximum Available Guarantee (Yrs.)**	Membrane Weight† (lb./sq. ft.)	Membrane Thickness (mil/s)	Mat [P (Polyester), F (Fiberglass)]	UL Classified†	FM Approved†	State of Florida Approved	TDI Listed	Miami-Dade County Product Control Approved	ICC	ENERGY STAR® Certified (U.S. only)	ASTM
APP															
RUBEROID® Torch Smooth	◆	◆		15	0.8	153	P	◆	◆	◆	◆	◆	◆	◆	D6222 Type I, Grade S
RUBEROID® Torch Granule	◆	◆		15	1.0	177	P	◆	◆	◆	◆	◆	◆	◆	D6222 Type I, Grade G
RUBEROID® Torch Plus Granule FR	◆	◆		20	1.2	170	PP	◆	◆	◆	◆	◆	◆	◆	D6222 Type II, Grade G
RUBEROID® EnergyCap™ Torch Granule FR	◆	◆		15	1.0	160	P	◆	◆	◆	◆	◆	◆	◆	D6222 Type I, Grade G
RUBEROID® EnergyCap™ Torch Plus Granule FR	◆	◆		20	1.5	170	PP	◆	◆	◆	◆	◆	◆	◆	D6222 Type II, Grade G
SBS															
RUBEROID® Mop Smooth	◆	◆	◆	20	0.9	90	P	◆	◆	◆	◆	◆	◆	◆	D6164 Type I, Grade S
RUBEROID® Mop Granule	◆	◆	◆	15	1.0	140	P	◆	◆	◆	◆	◆	◆	◆	D6164 Type I, Grade G
RUBEROID® Mop Smooth 1.5	◆	◆	◆	20	0.9	90	P	◆	◆	◆	◆	◆	◆	◆	D6164 Type I, Grade S
RUBEROID® Mop Granule FR	◆	◆	◆	15	1.0	155	P	◆	◆	◆	◆	◆	◆	◆	D6164 Type I, Grade G
RUBEROID® Mop Plus Granule FR	◆	◆	◆	20	1.0	155	PP	◆	◆	◆	◆	◆	◆	◆	D6164 Type II, Grade G
RUBEROID® EnergyCap™ Mop Plus Granule FR	◆	◆	◆	20	1.0	155	PP	◆	◆	◆	◆	◆	◆	◆	D6164 Type II, Grade G
RUBEROID® 20 Smooth	◆	◆	◆	15	0.6	85	F	◆	◆	◆	◆	◆	◆	◆	D6163 Type I, Grade S
RUBEROID® 30 Granule	◆	◆	◆	15	0.9	140	F	◆	◆	◆	◆	◆	◆	◆	D6163 Type I, Grade G
RUBEROID® 30 Granule FR	◆	◆	◆	15	0.9	140	F	◆	◆	◆	◆	◆	◆	◆	D6163 Type I, Grade G
RUBEROID® EnergyCap™ 30 Granule FR	◆	◆	◆	15	1.0	140	F	◆	◆	◆	◆	◆	◆	◆	D6163 Type I, Grade G
RUBEROID® Ultraclad® SBS (Aluminum)	◆	◆	◆	20	1.0	160	F(scrim)	◆	◆	◆	◆	◆	◆	◆	D6298
RUBEROID® Mop Plus Smooth	◆	◆	◆	20	0.7	120	PP	◆	◆	◆	◆	◆	◆	◆	D6164 Type II, Grade S
RUBEROID® HW Granule	◆	◆	◆	15	1.0	165	P	◆	◆	◆	◆	◆	◆	◆	D6164 Type I, Grade G
RUBEROID® HW Smooth	◆	◆	◆	20	1.0	165	P	◆	◆	◆	◆	◆	◆	◆	D6164 Type I, Grade S
RUBEROID® HW 25 Smooth	◆	◆	◆	20	0.6	98	F	◆	◆	◆	◆	◆	◆	◆	D6163 Type I, Grade S
RUBEROID® HW Granule FR	◆	◆	◆	15	1.0	160	P	◆	◆	◆	◆	◆	◆	◆	D6164 Type I, Grade G
RUBEROID® HW Plus Granule	◆	◆	◆	20	1.0	165	P	◆	◆	◆	◆	◆	◆	◆	D6164 Type II, Grade G
RUBEROID® HW Plus Granule FR	◆	◆	◆	20	1.0	165	PP	◆	◆	◆	◆	◆	◆	◆	D6164 Type II, Grade G
RUBEROID® EnergyCap™ HW Plus Granule FR	◆	◆	◆	20	1.0	165	PP	◆	◆	◆	◆	◆	◆	◆	D6164 Type II, Grade G

See related accessories on page 16.

LIBERTY™ Self-Adhering

LIBERTY™ SBS Self-Adhering Base/Ply Sheet Specifications (nom.)

- Roll length is 66 ft. (20.1 m)
- Roll width is 39.375 in. (1.0 m)
- Roll size is 2 squares, 216 sq. ft. (20.1 m²)
- FM Approved
- State of Florida Approved
- Miami-Dade County Product Control Approved
- Texas Dept. of Insurance (TDI) Listed

†All figures are approximate.

‡Classified by UL to ANSI/UL 790. Refer to UL Online Certification Directory for actual assemblies.

§Refer to <http://roofnav.fmglobal.com> for specific approvals.

**Guarantee duration based on installation by factory-certified contractor in approved system.

LIBERTY™ SBS Self-Adhering Cap Sheet Specifications (nom.)

- Roll length is 34 ft. (10.4 m)
- Roll width is 39.375 in. (1.0 m)
- Roll size is 1 square, 112 sq. ft. (10.4 m²)
- FM Approved
- State of Florida Approved
- Miami-Dade County Product Control Approved
- Texas Dept. of Insurance (TDI) Listed

GAFGLAS® BUR (Built-Up Roofing)

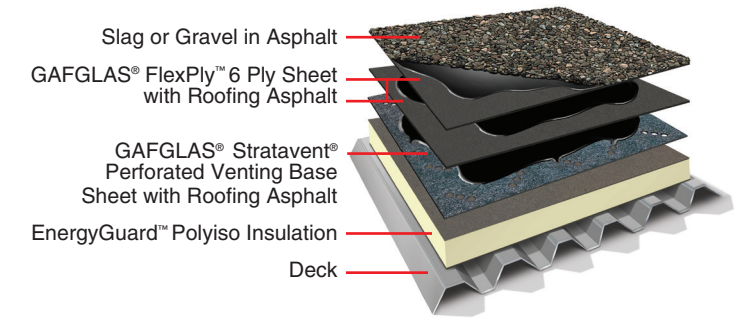
Time-proven GAFGLAS® BUR helps to reduce installation costs while tackling the most demanding roof applications

- GAF has a complete line of standard and premium base, ply, and cap sheets
- Multi-ply construction gives peace of mind that the roof is durable and will stand the test of time
- Faster to install due to metric rolls that are 39" (990 mm) wide compared to the 36" (914 mm) wide products
- High-performance product that can obtain an ANSI/UL 790 Class A roofing fire rating and an FM uplift rating up to Class 1-720³ when fully mopped to a primed insulated structural concrete deck
- Available guarantee up to 20 years¹
- GAFGLAS® Stratavent® Base Sheets are suitable for new and reroof applications when a venting base sheet is required
- GAFGLAS® Stratavent® Perforated Venting Base Sheet has the additional benefit of faster installation since applying one layer of asphalt can adhere the base sheet and ply sheet at the same time
- GAFGLAS® EnergyCap™ Mineral-Surfaced Cap Sheet has a highly reflective pre-applied elastomeric coating

¹See applicable guarantee for complete coverage and restrictions.

²Refer to UL Online Certification Directory for actual assemblies.

³Refer to FM Approvals RoofNav for actual assemblies.



TYPICAL 3-PLY PREMIUM SYSTEM WITH GAFGLAS® STRATAVENT®, FLEXPly™ 6, FLOOD COAT, AND GRAVEL

GAFGLAS® Built-Up Roofing Materials Selection Guide

BASE SHEETS

	Maximum Available Guarantee (Yrs.)*	Weight† (lb./sq. ft.)	Squares/Roll‡	Surface	UL Classified†	FM Approved†	Miami-Dade County Product Control Approved	State of Florida Approved	TDI Listed	ICC	ENERGY STAR® Certified (U.S. only)	ASTM
GAFGLAS® #75 Base Sheet	20	0.185	3	Smooth	◆	◆	◆	◆	◆	◆	◆	D4601 Type II
GAFGLAS® #80 Ultima™ Base Sheet	20	0.303	2	Smooth	◆	◆	◆	◆	◆	◆	◆	D4601 Type II
GAFGLAS® Stratavent® Nailable Venting Base Sheet	20	0.55	1.25	Smooth	◆	◆	◆	◆	◆	◆	◆	D4897 Type II
GAFGLAS® Stratavent® Perforated Venting Base Sheet	20	0.53	1.25	Smooth	◆	◆	◆	◆	◆	◆	◆	D4897 Type II

PLY SHEETS

GAFGLAS® Ply 4 Ply Sheet	12	0.06	5	Smooth	◆	◆	◆	◆	◆	◆	◆	D2178 Type IV
GAFGLAS® FlexPly™ 6 Ply Sheet	20	0.063	5	Smooth	◆	◆	◆	◆	◆	◆	◆	D2178 Type VI

SURFACE SHEETS

GAFGLAS® Mineral-Surfaced Cap Sheet	20	0.63	1	Granule	◆	◆	◆	◆	◆	◆	◆	D3909
GAFGLAS® EnergyCap™ Mineral-Surfaced Cap Sheet	20	0.73	1	Granule	◆	◆	◆	◆	◆	◆	◆	D3909

¹All weights and sizes are approximate.

²Classified by UL to ANSI/UL 790. Refer to UL Online Certification Directory for actual assemblies.

³Refer to <http://roofnav.fmglobal.com> for specific approvals.

*See applicable guarantee for complete coverage and restrictions.

See related accessories on page 16.

For technical information, visit our website at gaf.com or call 1-800-766-3411.

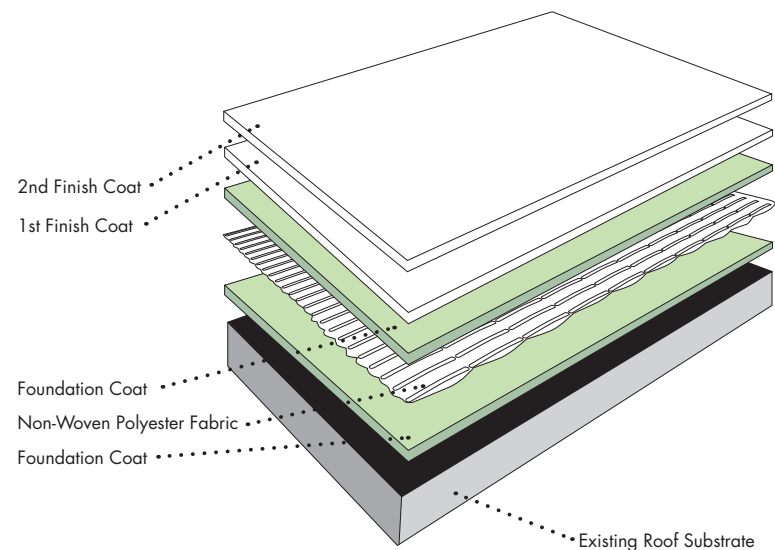
Contact GAF Technical Support for specific listings.

HydroStop® Liquid-Applied Membranes

With liquid-applied systems, you get a "custom fit" every time

HydroStop® PremiumCoat® System

GAF offers the HydroStop® PremiumCoat® System, a fabric-reinforced acrylic elastomeric system. The HydroStop® PremiumCoat® System is intended for re-cover and reroof applications and can be used over a variety of substrates. See *HydroStop® PremiumCoat® Liquid-Applied Roofing Application and Specifications Manual* for information. It's made using high-quality raw materials and forms a flexible, UV-resistant compound. This liquid-applied membrane is fully reinforced with a tough nonwoven polyester fabric, designed for roofing and flashing applications of many types. HydroStop® PremiumCoat® Finish Coat is internally plasticized and meets or exceeds ASTM D6083 for items such as flexibility, mechanical properties, and adhesion. HydroStop® PremiumCoat® System is Factory Mutual (FM) Approved. Refer to www.FMapprovals.com/roofNav for actual FM Approved assemblies.



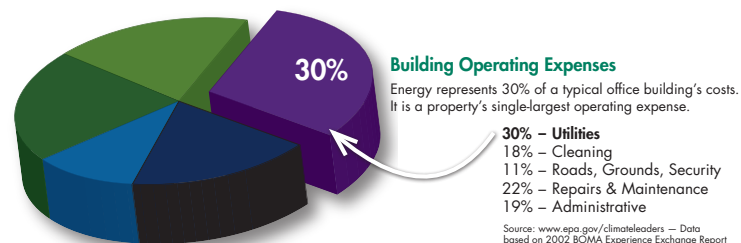
Liquid-applied roof systems are assembled onsite, forming a fully adhered, seamless membrane that meets the requirements of FM 4470 testing, which includes resistance to hail, foot traffic, wind uplift, and most importantly, water leakage.

HydroStop® PremiumCoat® Systems feature:

- Brush application
- Low maintenance
- Seamless and self-flashing
- Excellent UV and weather resistance
- High solar reflectivity and thermal emissivity (White and Cotton only)

HydroStop® PremiumCoat® Systems also:

- Can contribute toward satisfying Credits under LEED® v3 and LEED® v4. See the GAF LEED® Playbook at www.gaf.com/green for details.
- Can be used to comply with Title 24 roofing product requirements (White and Cotton only)



Note: LEED® — an acronym for Leadership in Energy and Environmental Design™ — is a registered trademark of the U.S. Green Building Council.

Resistance To Weathering

Resistance to weathering and retention of physical properties is a key performance attribute of any roof system. Data was obtained on a HydroStop® PremiumCoat® System consisting of fabric-reinforced acrylic membrane. Data shows that even after 8,000 hours of Xenon Arc accelerated weathering (per ATSM D2370), this system is able to retain virtually all of its initial elongation and breaking strength.

Tensile Properties	Initial	2000h	4500h	8000h
5 specimens; 3.0" lng x 0.5" wide Test Speed 1.0±0.2"/min Test Condition 73.4±3.6°F & 50±10%RH				
MD - Percent Elongation (max load) (%)	44	45	50	36
MD - Breaking Strength (lbf/in-width)	70	70	64	65
CMD - Percent Elongation (max load) (%)	42	48	53	41
CMD - Breaking Strength (lbf/in-width)	65	73	71	69

United Coatings™

The industry's premier line of roof coatings

Reliable Coating Solutions

United Coatings™ products from GAF make sense for both contractors and building owners. Contractors love the simple installation, wide range of technologies, and proven track record of United Coatings™ products. Most products do not require expensive equipment to install, and are safe to handle and apply. The monolithic design helps reduce points of failure, leaks, and resultant callbacks, providing peace of mind. Building owners appreciate the value that GAF products bring. Reliable solutions mean not having to replace entire roofs; non-toxic application prevents interruption of occupancy or other undesirable effects. The reflective, durable characteristics of many of our white coatings help provide energy savings* and long-term aesthetic stability. Other benefits include:

- No tear-offs required
- Installed while occupants are in the building
- No new insulation required
- No lifting of AC units
- No raising of drains

Highly reflective, top-quality pigments reflect a majority of the sun's heat, dramatically lowering the temperature of the underlying roof substrate and interior temperatures. This results in reduced HVAC loads, which saves energy usage and expense.* Further, equipment installed on roof areas operate at reduced temperatures, which may extend the equipment's life.

Not sure which coating is right for you? Let Coatings Coach help you find the solution based on your specific job requirements at CoatingsCoach.gaf.com.

*Energy cost savings are not guaranteed and the amount of savings may vary based on climate, utility rates, roof reflectance, insulation levels, HVAC equipment efficiency, and other factors.



EVERGUARD® TPO

Single-ply roofing systems



Why TPO

In the 20+ years that TPO has been in the field, it's become the most popular product used for low-slope roofing. Over 1.8 billion sq. ft. are installed annually, making up over 50% of single-ply roofs being installed today.

The rapid rise in popularity can be associated with several of TPO's inherent benefits, including:

- **Great Value...**
Excellent performance at a cost-effective price.
- **Excellent Seam Strength...**
Heat-welded seams provide greater seam strength to taped and other seams.
- **Long-term Weathering...**
Excellent long-term heat and UV resistance.
- **Energy Saving...**
Highly reflective and emissive white surface can help reduce energy costs and urban heat island effect.
– Check out your potential energy savings by going with a white roof at cool.gaf.com.
- **Inherently Flexible...**
No need for plasticizers.
- **Naturally Fungal Resistant...**
Doesn't require biocides.
- **Versatile Application Methods...**
Including high-performance roofs requiring high wind uplift, increased puncture resistance, or quick economical systems.
- **Faster Installation...**
Available on 12' (3.66 m)-wide rolls and prefabricated accessories to eliminate field fabrication of details.

Why GAF

- Over 130 years in business and North America's largest roofing manufacturer.
- Offers a full line of roofing solutions, including TPO and PVC single-ply systems.
- Capital investments of over \$130 million from 2011–2016 in commercial roof manufacturing, giving GAF the most state-of-the-art equipment in the industry.
- Only GAF offers the patent-pending EverGuard Extreme® membrane with the longest guarantee in the industry (up to a 35-year guarantee*).
- Leader in sustainability, including having EPDs and HPDs and being on the Red List Free listings.
- Commissioned the largest independent study ever conducted on TPO performance among North American manufacturers.
– Results show GAF has the best-performing TPO membranes in accelerated aging tests (visit TPOResults.com to learn more).

*See applicable guarantee for complete coverage and restrictions.

EverGuard® Membrane Attachments & Adhesives

Solutions for excellent performance and value

EverGuard® Membrane Attachment Options:

Installing Smooth TPO with fasteners in a mechanically attached system offers several benefits, including:

- Up to 50% faster installation compared to adhered smooth membrane installations
- Reliability and cost effectiveness
- Familiarity with the industry as the most common installation method in single-ply membranes
- Consistent installation in a wide variety of temperatures
- No sprayers or additional capital investments
- A great option for occupied buildings, as there is no odor from adhesives

Installing Smooth TPO with the RhinoBond® Attachment System offers several benefits, including:

- A fast and easy installation
- Smaller crews and install time, with up to 50% faster installation by adding a second machine
- Quick dry-in, as membrane seams can be welded before RhinoBond® Plates are bonded
- Can be installed in a wide variety of temperatures
- No waiting for cure time, fumes, mess, empty pails, or VOCs from traditional adhesives
- No half sheets and fewer seams
- Longer warranties
- Less flutter with optimized attachment across the entire sheet

Installing an adhered EverGuard® Smooth TPO System offers several benefits, including:

- Longer guarantees compared to mechanically attached systems
- Excellent wind uplift ratings
- A uniform, smooth appearance
- Familiarity with workers, as this installation is common in the industry
- Minimizes thermal drift while acting as a vapor barrier

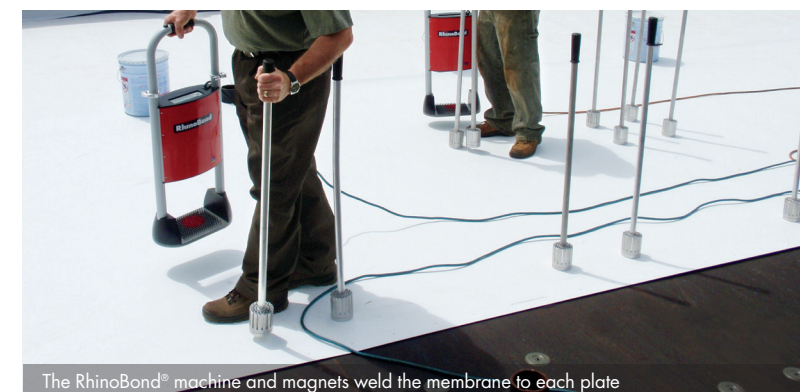
GAF offers several adhesives that are compatible with EverGuard® smooth TPO, including:

- **SBA 1121 TPO Bonding Adhesive...** The most frequently used, traditional solvent-based GAF bonding adhesive
- **EverGuard® TPO 3 Square and 6 Square Low VOC Bonding Adhesives...** For use in areas where there are VOC regulations

Note: RhinoBond® is a registered trademark of OMG, Inc.



TPO is fastened to the deck at the seam



The RhinoBond® machine and magnets weld the membrane to each plate



Adhesive is rolled on both the substrate and membrane and allowed to flash off

- **EverGuard® WB181 Bonding Adhesive...** A water-based bonding adhesive that is both VOC compliant and low odor

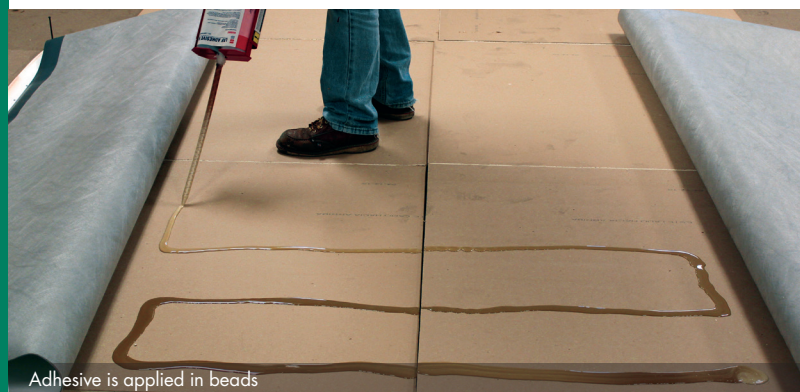
See gaf.com for additional details, including application.

EverGuard® Fleece-Back TPO

Why GAF EverGuard® Fleece-Back TPO

Factory-applied polyester fleece provides additional protection to the membrane, offering a variety of benefits, including:

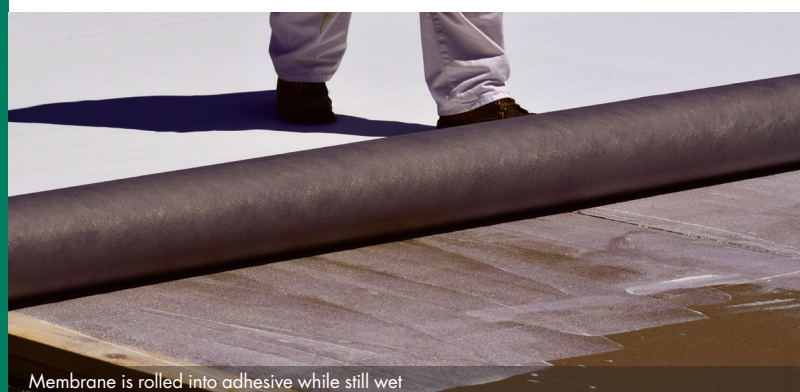
- Does not require a slip sheet when re-covering over a variety of roofs
- Provides enhanced puncture resistance, especially in areas more prone to hail
- Increases installation efficiency 2–3 times when installing EverGuard® Fleece-Back TPO with GAF 2-Part Roofing Adhesive (compared to standard TPO adhesives) or OlyBond 500® Equipment-Free Canister System.



Adhesive is applied in beads



Adhesive is applied in a spatter pattern



Membrane is rolled into adhesive while still wet

Installing fleece-back with low-rise foam roofing adhesive offers several benefits including:

- Up to 50% faster installation than traditional fully adhered, smooth systems
- Increased productivity and smaller crews versus other attachment methods
- Can qualify for longer guarantees compared to mechanically attached
- Low-VOC content with low odor
- Increased puncture resistance due to fleece backing of EverGuard® membrane
- Excellent wind uplift
- Cold weather LRF also available for temperatures as low as 25°F (-3.9°C)

Installing fleece-back with GAF 2-Part Roofing Adhesive or OlyBond 500® Equipment-Free Canister provides additional benefits including:

- High coverage rate canisters
- No expensive equipment or maintenance
- Fast set up and shut down

Installing fleece-back TPO with EverGuard® WB181 Bonding Adhesive offers several benefits, including:

- Up to 50% faster installation time than traditional smooth, adhered systems
- Reduced labor costs
- Low-VOC content with little-to-no odor, reducing disruption to building occupants
- Additional puncture resistance due to the fleece backing of EverGuard® membrane
- Longer guarantees compared to mechanically attached systems
- Excellent wind uplift ratings
- A uniform, smooth appearance
- Minimized thermal drift while acting as a vapor barrier

Note: OlyBond 500® is a registered trademark of OMG, Inc.

EverGuard® PVC and EverGuard® PVC Fleece-Back

Performance advantages in a membrane suitable for all single-ply systems

Why EverGuard® PVC and EverGuard® PVC Fleece-Back

EverGuard® PVC is a time-tested membrane that's a great option for re-covering roofs — as well as for new construction — that includes a guarantee for up to 25 years.* EverGuard® PVC is suitable for all types of single-ply systems including mechanically attached, RhinoBond®, and adhered. And if you're looking for additional protection, EverGuard® PVC Fleece-Back can offer it.

EverGuard® PVC

Features & Benefits

- **Increased Chemical Resistance...** Compared to other common roofing technologies
- **Excellent Seam Strength...** Heat-welded seams provide greater seam strength to taped and other seams
- **Versatile Application Methods...** Including high-performance roofs requiring high wind uplift, increased puncture resistance, or quick economical systems
- **Faster Installation...** Available in 10' (3.05 m)-wide rolls and prefabricated accessories to eliminate field fabrication of details
- **Longer-Term Weathering...** Excellent long-term UV and ozone resistance

EverGuard® PVC Fleece-Back

Features & Benefits

- No slip sheet required when re-covering over a variety of roofs
- Enhanced puncture resistance, especially in areas more prone to hail
- When you install EverGuard® PVC Fleece-Back with Low-Rise Foam Adhesives, you will get even more benefits such as:
 - Up to 50% faster installation than traditional adhered, smooth systems
 - Increased productivity and smaller crews versus other attachment methods
 - Excellent wind uplift

And don't forget about EverGuard® WB181 Bonding Adhesive. This adhesive is applied to the substrate only and EverGuard® Fleece-Back PVC is rolled in wet — reducing installation time up to 50% compared to traditional adhered, smooth systems.

*See applicable guarantee for complete coverage and restrictions.



Note: RhinoBond® is a registered trademark of OMG, Inc.

GAF EnergyGuard™ Roof Insulation Products

Economical and exceptional thermal performance for all types of roofing systems

EnergyGuard™ Polyiso and EnergyGuard™ NH Polyiso

Building methods and energy codes are constantly changing but GAF EnergyGuard™ Polyiso and EnergyGuard™ NH Polyiso provide the constant quality, performance, and lineup of products offering a solution to meet the ever-changing low-slope market needs.

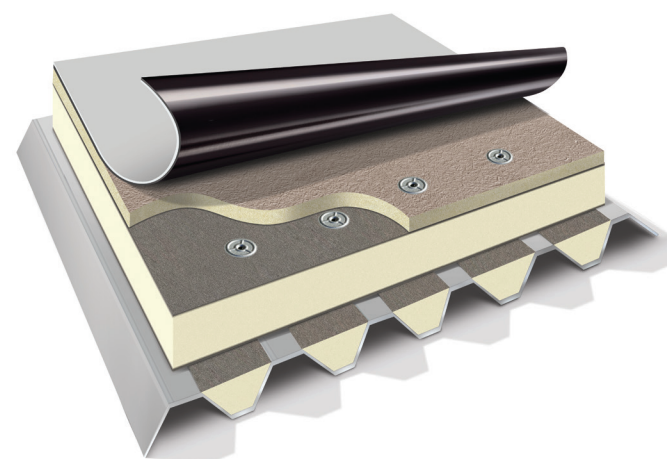
EnergyGuard™ Polyiso and EnergyGuard™ NH Polyiso are designed for use in practically any low-slope roofing application including built-up, modified bitumen, and most single-ply roofing systems.

What is the difference between EnergyGuard™ Polyiso Insulation products and EnergyGuard™ NH Polyiso Insulation products? They both offer one of the highest insulating values on the market to help save on energy costs, but EnergyGuard™ NH uses a new, innovative chemical composition that does not contain any halogenated flame-retardant chemicals. It supports the GAF commitment to providing architects, contractors, and building owners with affordable products that help them meet their sustainable and environmental design goals.

Features and Benefits

- Designed for use in practically any low-slope roofing application, including BUR, mod bit, and single-ply systems
- Offers various facers and compressive strength options depending on your specification needs
- Also offers one of the highest R-values compared to any other type of non-polyiso insulation products.
- Meets FM 4450/4470 (consult RoofNav.com for specific assemblies) and UL 1256/790/263 (refer to UL Online Certifications Directory for actual assemblies)
- Meets ASTM C1289 Type II, Class 1, Grade 2 (20 psi)*, and available in Grade 3 (25 psi)
- Low water permeability means a lower overall perm rating than many conventional insulation boards
- High moisture resistance and no capillarity creates stability to maintain its physical and insulating characteristics
- Its light weight makes this material easier to handle on the jobsite and installs faster
- Easier cutting in the field provides the installer with simplified fabricating on the roof deck, minimizing on-the-job damage
- Manufactured with EPA-compliant blowing agents containing no CFCs or HCFCs; has zero ozone depletion potential (ODP) and virtually no global warming potential (GWP)
- Available in a variety of thicknesses from 1" (25.4 mm) to 4.6" (117 mm) to best suit your needs
- Available in 4' x 4' (1.21 m x 1.21 m) and 4' x 8' (1.21 m x 2.44 m) boards
- Tapered panels are also available in slopes of 1/16:12, 3/16:12, 1/8:12, 3/8:12, 1/4:12, and 1/2:12

ENERGYGUARD™ POLYISO INSULATION CUSTOM CUT



EnergyGuard™ Polyiso Insulation custom cut for flute-filler applications is designed to fill the flutes in standing seam or lap seam metal roof retrofit systems. It helps improve dimensional stability as well as provides additional R-value to an existing roof deck.

EnergyGuard™ Polyiso Insulation custom cut for flute-filler applications is available with either straight-cut or bevel-cut edges in order to suit a variety of metal roof retrofit applications.

EnergyGuard™ Tapered Polyiso Insulation

Get the longevity you deserve out of your roof

EnergyGuard™ Tapered Polyiso Insulation

EnergyGuard™ Tapered Polyiso Insulation has a thermally efficient polyisocyanurate core bonded between glass fiber-reinforced cellulosic felt facers. Also available in our coated glass-faced products such as EnergyGuard™ Ultra, EnergyGuard™ NH Ultra, EnergyGuard™ Barrier, and EnergyGuard™ NH Barrier. It is readily available in various slope profiles such as the most popular and efficient tapers: 1/8:12 (1%), 1/4:12 (2%), and 1/2:12 (4%).

Tapered polyiso insulation provides a logical and economical answer for roofs that do not permit adequate positive drainage like low-slope roofs. When correctly installed, tapered insulation helps eliminate problems due to ponding water and can extend the longevity of your low-slope roofing system.

GAF offers a full lineup of tapered panels to provide you with different options to help you create the best design for your roofing project.

- EnergyGuard™ Polyiso and EnergyGuard™ NH Polyiso meet ASTM C1289 Type II, Class 1, Grade 2 (20 psi)*, and Grade 3 (25 psi)
- EnergyGuard™ Ultra/EnergyGuard™ NH Ultra/EnergyGuard™ Barrier/EnergyGuard™ NH Barrier meet ASTM C1289 Type II, Class 2, Grade 2 (20 psi)*, and Grade 3 (25 psi)



Complete tapered polyiso design for proper water management

Features

- EnergyGuard™ Tapered Polyiso Insulation is designed for use over structural roof decks to provide positive slope to drain and to provide thermally efficient insulation
- When properly installed, it is suitable for use under built-up, modified bitumen, and most single-ply roofing systems

Benefits

- Properly designed and installed EnergyGuard™ Tapered Polyiso Insulation Systems virtually eliminate ponding water
- High thermal efficiency
- Easily installed with mechanical fasteners, low-rise foam, or hot asphalt, or loose-laid in a ballasted system
- Low point and letter codes are designated on each board
- Engineering design board layouts are available from your plans and field-verified dimensions. Contact our Tapered Design Group at TDG@gaf.com.

*Stated dimensional stability tolerance: board thickness shall not diminish by more than 2% max.

*Stated dimensional stability tolerance: board thickness shall not diminish by more than 2% max.

Choosing the Right Polyiso Insulation For Your Roofing System

Choosing the right polyiso for a roofing system can be confusing. There are many different types of facers and attributes to meet the required energy codes and specifications. So which type of polyiso meets the needs of the roofing system for your building?

		EnergyGuard™ Polyiso	EnergyGuard™ NH Polyiso	EnergyGuard™ Ultra*	EnergyGuard™ NH Ultra*	EnergyGuard™ Barrier	EnergyGuard™ NH Barrier	EnergyGuard™ HD/HD PLUS	EnergyGuard™ NH HD/HD PLUS
Roof Type	New	•	•	•	•	•	•	•	•
	Re-cover	•	•	•	•	•	•	•	•
	Retrofit (metal)	•	•	•	•	•	•	•	•
Attribute/Benefit	Highest R-value	•	•	•	•	•	•	•	•
	Lightweight; easy to handle and cut	•	•	•	•	•	•	•	•
	Contains no CFCs or HCFCs; has zero ODP and is EPA compliant	•	•	•	•	•	•	•	•
	Reinforced cellulosic felt facers	•	•						
	Coated glass fiber			•	•	•	•		
	Premium coated glass fiber						• (top)	•	•
	Flat board product in 4' x 4' (1.21 m x 1.21 m) or 4' x 8' (1.21 m x 2.44 m)	•	•	•	•	•	•	•	•
Tapered board product (4' x 4' [1.21 m x 1.21 m] only)	•	•	•	•	•	•			
Roof Challenges	High-traffic roof			•	•	•	•	•	•
	High-humidity structure			•	•	•	•	•	•
	Resistance to mold (ASTM D3273)			•	•	•	•	•	•
	Achieves an ANSI/UL 790 Class A roofing fire rating over combustible decks with a 1/2" (15.7 mm) of Barrier and 1" (25.4 mm) NH Barrier board thickness††					•	•		
	Component of Class 1-SH (Hail) Rated Assembly	•	•	•	•			•	•
Transparency	Red List Free product		•		•		•		•
	HPD (Health Product Declaration)	•	•				•		
	EPD (Environmental Product Declaration)	•	•						•
	PIMA Quality Mark	•	•	•	•				
	GreenCircle Certified – Recycled Content	•	•						
Codes Compliance	C1289/Type II/Class 1/Grade 2 (20 psi)** and Grade 3 (25 psi)	•	•						
	C1289/Type II/Class 2/Grade 2 (20 psi)** and Grade 3 (25 psi)			•	•	•	•		
	C1289/Type II/Class 4/Grade 1					•	•	•	
	C1289/Type II/Class 4/Grade 2								•
	FM (4450/4470)†	•	•	•	•			•	•
	UL (ANSI/UL 790, ANSI/UL 1256, ANSI/UL 263)††	•	•						
	UL (ANSI/UL 790, ANSI/UL 1256)			•	•			•	•
	UL (ANSI/UL 790)					•	•		
	Miami-Dade County Product Control Approved	•	•	•	•			•	•
	State of Florida Approved	•	•	•	•	•	•	•	•

*Class A roofing fire rating over combustible deck when used with single-ply TPO, a total of at least 3" (76 mm) of EnergyGuard™ Ultra is required; a Class B fire rating is also obtained when using at least a single layer of 1.5" (38.1 mm).

**Stated dimensional stability tolerance: board thickness shall not diminish by more than 2% max. †Refer to FM Approvals at RoofNav.com for actual assemblies. ††Refer to UL Online Certification Directory for actual assemblies.

NOTE: With the exception of EnergyGuard™ HD/HD PLUS Polyiso and EnergyGuard™ NH HD/NH HD PLUS Polyiso, stated dimensional stability tolerance: board thickness shall not diminish by more than 2% max. Some membrane systems may require a non-polyisocyanurate cover board, the use of GAFGLAS® Stratavent™ Perforated Venting Base Sheet, or a mechanically attached base sheet over polyisocyanurate insulations. Check the membrane specification for installation, code, and warranty requirements.

GAF Roofing Accessories

A single supplier for all your roofing components means a single source for accountability

Asphaltic Roofing Solutions

Today, there are many technologies available for commercial roofing, but none of them have been as time-tested for toughness and reliability as modified bitumen and built-up roofing. At GAF, we have a full line of high-quality roofing adhesives, cements, primers, and sealants designed to maximize performance of our RUBEROID®, LIBERTY™, and GAFGLAS® asphaltic product membranes. These products have been tested to ASTM standards and used with multiple systems to achieve UL, FM, and Miami-Dade Product Control Approvals.

Whether you are installing a cold, hot, or torch-applied asphaltic roof, be confident that the GAF products you choose will work together to provide a long-lasting, durable system that meets the test of time.

PRIMER



MATRIX™ 307 PREMIUM ASPHALT PRIMER

- Penetrates concrete and masonry to promote an excellent bond for asphaltic adhesives, cements, or coatings
- Strong and flexible to accommodate temperature expansion and contraction
- Spray, roller, or brush apply
- ASTM D41
- Color: Black
- Available in 4.75-gallon (18L) pails & 53-gallon (201L) drums

State of Florida Approved



FLASHING CEMENTS



MATRIX™ 201 PREMIUM SBS FLASHING CEMENT

- **BEST** quality flashing cement for SBS modified bitumen systems
- For flashing details, attaching membranes to walls, and repairs
- High level of modifiers ensures excellent bonding strength and flexibility to accommodate roof movement
- Apply with notched trowel or wide-edged putty knife
- ASTM D4586 Type I
- Color: Black
- Available in 4.75-gallon (18L) pails & 11-ounce (312g) tubes



MATRIX™ 202 SBS FLASHING CEMENT

- **GOOD** quality flashing cement for SBS modified bitumen systems
- For flashing details, attaching membranes to walls, and repairs
- Modified to ensure good bond strength and flexibility to accommodate movement
- Apply with notched trowel or wide-edged putty knife
- ASTM D4586 Type I; ASTM D3409
- Color: Black
- Available in 4.75-gallon (18L) pails



MATRIX™ 203 PLASTIC ROOF CEMENT

- General-purpose roof cement
- Heavy, "trowel-grade" consistency makes product ideal for sealing leaks and openings around flashings, chimneys, vents, skylights, joints in metal edges, and gutters
- Can also be used for adhering BUR base, ply, and cap sheets in vertical applications
- Apply with notched trowel or wide-edged putty knife
- ASTM D4586 Type I; ASTM D3409
- Color: Black
- Available in 4.75-gallon (18L) pails



MATRIX™ 204 WET/DRY ROOF CEMENT

- Great for emergency repairs — even wet surfaces
- Unique water-displacing additive displaces water from wet surfaces to create a tight seal
- Heavy, "trowel-grade" consistency makes this product ideal for sealing leaks and openings around flashings, chimneys, vents, skylights, joints in metal edges, and gutters
- Apply with notched trowel or wide-edged putty knife
- ASTM D4586 Type I
- Color: Black
- Available in 2.8 (10.6L) & 4.75-gallon (18L) pails



ADHESIVES



MATRIX™ 101 PREMIUM SBS MEMBRANE ADHESIVE

- **BEST** quality adhesive for cold-applied SBS modified bitumen systems (formerly TOPCOAT® Matrix™ MajorBond™ Modified Bitumen Adhesive)
- Ideal for high wind uplift areas needing maximum adhesive strength
- Spreads easily and low odor
- Spray apply or use a 1/8" (3.18 mm) notched squeegee
- Color: Black
- Available in 4.75-gallon (18L) pails & 53-gallon (201L) drums



MATRIX™ 102 SBS MEMBRANE ADHESIVE

- **GOOD** quality adhesive for cold-applied SBS modified bitumen systems
- Fiber reinforced, rubberized, and low odor
- Spray apply or use a 1/8" (3.18 mm) notched squeegee
- ASTM D3019 Type III
- Color: Black
- Available in 4.75-gallon (18L) pails & 53-gallon (201L) drums



MATRIX™ 103 COLD PROCESS ADHESIVE

- Designed specifically for BUR cold-applied systems
- Exclusive SURE GRIP™ Technology with excellent bonding strength and flexibility
- Spray apply or use a 1/8" (3.18 mm) notched squeegee
- Low odor
- ASTM D3019 Type III; ASTM D4479 Type I
- Color: Black
- Available in 4.75-gallon (18L) pails



The M-Curb™ Pitch Pocket System

- Accommodates any size opening
- Produces long-lasting results when system components are used
- Provides an impact-resistant watertight seal

Refer to the GAF published data sheet and the RUBEROID®/GAFGLAS® Flashing Details Application and Specifications Manual for complete details.



SA Vapor Retarders

Take the guesswork out of flashing repair

- 45" (1.1 m) roll provides increased coverage across roof deck
- Easy-to-peel release film for faster installation
- Durable top surface protects roof from inclement weather
- High tensile strength provides resistance to foot traffic



MajorSeal™ Liquid Flashing System

The MajorSeal™ Liquid Flashing System is used to waterproof irregularly shaped penetrations, low parapet walls, at door thresholds, in lieu of pitch pans, and at virtually any application where more traditional flashings are not practical.



M-Weld™ Preflashed Drainage & Moisture-Control Accessories

Provide a uniform finished look for the roof while improving the reliability of penetration flashings

M-Weld™ Preflashed Accessories...

Are one-piece roofing detail assemblies that can be used with modified bitumen and built-up roofing systems. These accessories are flashed with either an APP modified bitumen (for use with torch-applied membranes) or an SBS-modified bitumen (for use on built-up roofs and mop- or cold-applied SBS applications).

GAF Roofing Accessories

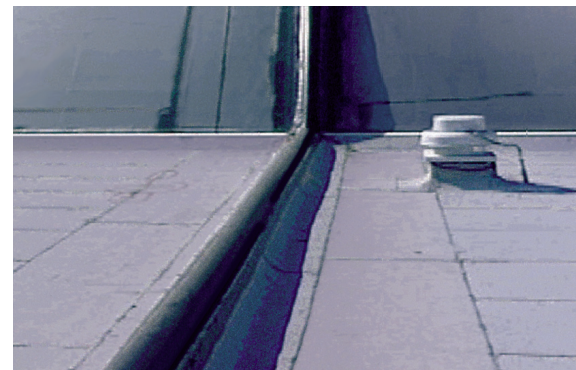
Metalastic® Expansion Joint Covers

Reduce field splices — and the risk of leaks

GAF has designed the most flexible group of expansion joint covers in the industry. Available in 50' (15.24 m) rolls or customized up to 250' (76.2 m) rolls in black or white, Metalastic® Expansion Joint Covers eliminate splice joints every 10' (3.05 m) and promote trouble-free roofing system performance. Substantially reduces the contractor's installation labor, thereby reducing overall installed cost.



CMF Style
Curb-to-Curb style
expansion joint profiles



Metalastic® Cover in continuous length run

Perimeter Edge Metal

Perimeter edge metal provides many benefits in addition to aesthetics, such as:

- Functions as the termination and transition between the roof and other building components
- Ensures product consistency and performance
- Includes fasteners and pre-punched slotted holes which provide proper attachment for increased productivity
- Allows for expansion and contraction which helps prevent oil canning
- Helps save on labor because there's no crimping required at the roof edge
- Factory-fabricated corners and accessories come premanufactured, providing a clean look while eliminating field labor



GAF Perimeter Edge Metal offers a full lineup of prefabricated coping, fascia, drip edges, gutters, downspouts, and trim in both steel and aluminum in a variety of Kynar®-coated colors.

All Perimeter Edge Metal Products are tested and approved per ANSI/SPRI FM 4435/ES-1 since they are the first line of protection in a wind event. Refer to FM Approvals at RoofNav.com for actual assemblies.

Drill-Tec™ Fasteners

Drill-Tec™ Fasteners and Plates offer a comprehensive lineup of insulation and membrane products that can be used on almost any deck type. The fasteners are made with high-quality corrosion-resistant stainless steel alloy and the plates of Galvalume®-coated steel — to provide the performance you can rely on.

Drill-Tec™ Fasteners...

Come in a wide range of lengths and head types.

Insulation Plates...

For both regular, flat polyiso insulation as well as cover board applications.

Membrane Plates...

A wide variety of membrane plates, including double-barbed 2 3/8" (60.3 mm) plate options, exclusive to GAF, which can increase wind uplift ratings compared to standard single-barbed plates.

GAF Drill-Tec™ Fasteners and Plates meet all the standards required by Factory Mutual (FM)† to reduce your labor cost and increase your productivity. Most Drill-Tec™ Fasteners and Plates are compatible with Accutrac®, AccuSeam®, and RhinoBond® tools.



EverGuard® Prefabricated Accessories

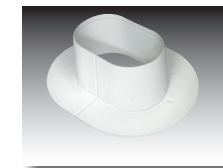
Boost productivity up to 200%* while reducing installed cost by up to 12% (compared to field-fabricated accessories), and eliminate common problems often associated with field-fabricated details

EverGuard® TPO and PVC Prefabricated Accessories



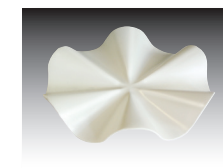
Walkway Roll

Heat welds directly to TPO membrane or installed with seam tape; available in Gray and Yellow



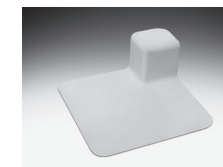
Pourable Sealer Pocket

Structural foundation for EverGuard® Pourable Sealant



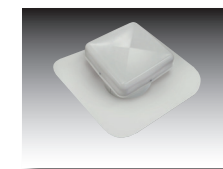
Fluted Corner

For use in flashing outside corners of base and curb flashings



Universal Corner

Accommodates both inside and outside corners of base and curb flashings



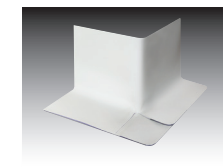
Vent

Limits airflow to one direction, avoiding moisture buildup



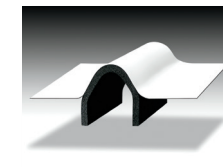
Coated SpeedTite™ Drain

TPO- or PVC-coated flange for direct hot-air welding of TPO or PVC roof membranes



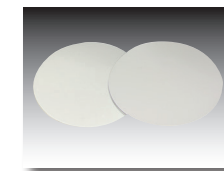
Corner Curb Wrap

Four standard sizes to flash curbs that are 24" (610 mm), 36" (914 mm), 48" (1.22 m), and 60" (1.52 m) in size



Expansion Joint

Reinforced with 60 mil TPO membrane; accommodates both roof-to-roof and roof-to-wall applications



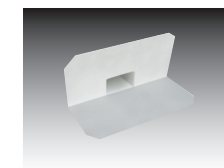
T-Joint Cover Patches

Conforming seal for use over T-joints in 60 and 80 mil membrane applications



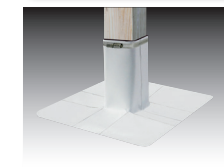
Inside Corner

Manufactured to accommodate inside corners of base and curb flashings



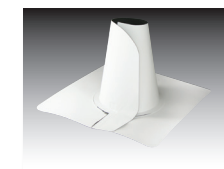
Scupper

TPO can be heat welded to the scupper for a strong, secure installation



Square Tube Wrap

Tube wraps are split with overlap to wrap around square or rectangular tubing; ensures a solid weld



Split Pipe Boot

Three standard sizes accommodate most pipes and conduits



Vent Boot

Accommodates most common pipes and conduits from 1" (25.4 mm) to 6" (152 mm)



Conical Pipe Boot

Accommodates most common pipes and conduits from 1" (25.4 mm) to 6" (152 mm) (Available in PVC and custom-color TPO)



Cover Tape

Self-adhered TPO for use in stripping in edge metal

Not Pictured: 6" (152 mm) x 150' (45.7 m) Detail Strip, Coated Metal, Cut Edge Sealant

*Based on GAF estimate to field-fabricate flashing details. Note: SpeedTite™ is a trademark of OMG, Inc.

Go to gaf.com/smartdetails for more information on flashing details.

Note: Kynar® is a registered trademark of Arkema, Inc.; Galvalume® is a registered trademark of BIEC International Inc. and some of its licensed producers; RhinoBond® is a registered trademark of OMG, Inc.

†Refer to FM Approvals at RoofNav.com for actual assemblies.

Excellent Guarantees For Quality Systems

Years of proven quality allow GAF to offer roofing system guarantees on Modified Bitumen, Built-Up Roofing, EverGuard® TPO and PVC, EverGuard Extreme® TPO, United Coatings™, and HydroStop® Roofing Systems. GAF Diamond Pledge™ No-Dollar-Limit (NDL) and System Pledge™ roof guarantees are available from 10 years up to 35 years* (material-only warranties are also available on GAF products). Guarantee extensions of up to 25% are available with the GAF WellRoof® Guarantee Extension.** Contact Guarantee Services for details.



Master Roofing Contractor Programs



Choosing the right roofing system, one supplied by the right materials manufacturer, supported with the right guarantee, and — most important — installed by the right contractor, is essential for the protection of the owner's facility. Through its Master Roofing Contractor Programs, GAF has aligned with key professional roofing contractors throughout the United States to ensure the quality installation and long-term performance of all Diamond Pledge™ and System Pledge™ guaranteed systems. Selection of a Master or Master Select™ Roofing Contractor to install a GAF system will result in the cost-effective, on-time roofing solution that you demand while maintaining superior quality and performance.

Certified Maintenance Professional (CMP) Program

Having a maintenance program in place for your roofing asset is critical for not only optimizing its overall longevity and performance but also helping ensure you have uninterrupted guarantee coverage if issues arise. GAF Certified Maintenance Professionals (CMPs) are contractors who have not only the expertise to maintain and service your roof but also the exclusive ability to extend your *Diamond Pledge™ NDL Roof Guarantee* by 25% — via the *WellRoof® Guarantee Extension*** at no cost to you with annual preventive maintenance.



gaf.com – Your Resource For Complete Product Data

The GAF website contains technical data and information on both low- and steep-slope products. Information can be viewed or, in many cases, faxed or e-mailed to you, at your request directly from our website!

Full-Service Technical Support

The GAF Technical Services Group is available to provide additional data and information on geographic details, specific GAF projects, and code-related questions. For more information about our quality roofing products, systems, or support, visit our website at gaf.com or call our toll-free **Technical Support Hotline, 1-800-766-3411**.

Architectural Information Services... An Entire Group Dedicated To You

Architects and specifiers can access an entire team devoted to assisting you with the specification process. They can answer questions and provide assistance with master specification preparation and other valuable activities at no charge to you. Call them toll free at **1-800-522-9224** or e-mail AIS@gaf.com.

Regional Sales Offices

For the location of the closest GAF distributor or factory-certified contractor, call the nearest GAF regional office.

Central

2600 Warrenville Road,
Suite 208
Downers Grove, IL 60515
630-241-5380

Northeast

700 Second Street,
Suites C & D
Swedesboro, NJ 08085
856-241-0241

Southeast

9950 Princess Palm Avenue,
Suite 312
Tampa, FL 33619
813-622-3962

Southwest

14911 Quorum Drive,
Suite 600
Dallas, TX 75254
972-851-0500

West

11800 Industry Avenue
Fontana, CA 92337
951-360-4200
800-445-9330

Canada Sales Office

855-492-8085

Service Contacts

**TECHNICAL SUPPORT AND
GUARANTEE SERVICES**
1-800-766-3411

INTERNATIONAL SALES
1-800-555-1852

ARCHITECTS AND SPECIFIERS
1-800-522-9224



We protect
what matters most™

gaf.com

*See applicable GAF roof guarantee for complete coverage and restrictions.

**Capped at 35 years. WellRoof® Guarantee Extension is not available for liquid-applied warranties.